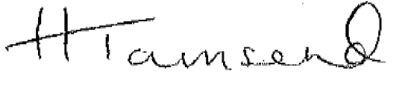


MEETING of Yate Town Council's Environment and Community Committee

Wednesday 18th January 2023

You are invited to attend a Meeting of the **ENVIRONMENT AND COMMUNITY COMMITTEE** of **Yate Town Council** to be held at Poole Court on **Tuesday 24th January 2023** between 7.00pm - 9.00pm for the purpose of transacting the business set out in the Agenda below.



Hayley Townsend
Town Clerk

Agenda

In the exercise of Council functions, Members are reminded that the Council has a general duty to consider Crime & Disorder, Health & Safety, Human Rights and the need to conserve biodiversity. The Council also has a duty to tackle discrimination, provide equality of opportunity for all and foster good relations in the course of developing policies and delivering services under the public sector Equality Duty and Equality Act 2010.

In the event of a fire alarm or other emergency (signalled by a continuously ringing bell), please exit the Council Chamber and leave the building through the nearest fire exit or safest evacuation route. Please meet by the flag pole in the car park. (NB: The nearest fire exit is located at the end of the corridor. (Exit the Council Chamber and turn right)).

1. Apologies for Absence.
2. Declarations of Interest under the Localism Act 2011

Members who consider that they have an interest are asked to: (a) State the item number in which they have an interest, (b) The nature of the interest, (c) Whether the interest is a disclosable pecuniary interest, non-disclosable pecuniary interest or non-pecuniary interest.

3. Public Participation Session with Respect to Items on the Agenda

4. To receive and approve the Minutes of the Environment and Community Committee meeting held on 8th November 2022.
[Click here for minutes.](#)

5. To consider the following Items on the Clerk's Report:

Item 1 Items for Discussion/Requiring Resolution or Recommendation to Full Council

- 1/1 Consultations
 - a) Urgent Consultations
- 1/2 Bristol Frome DNA Bid
- 1/3 Spring Clean 2023
- 1/4 Electric vehicle Charging (EV) & EV Car Clubs
- 1/5 Armadillo Funding
- 1/6 Yate Ageing Better & Wellbeing
- 1/7 Public Space Protection Orders

Item 2 Items for Noting

- 2/1 Estates Manager's Report
- 2/2 Status of all groups that report to the Environment and Community Committee
- 2/3 Yate Ageing Better, Health & Wellbeing Sub-Committee
- 2/4 Leases
- 2/5 Women's Football
- 2/6 Consultations
- 2/7 Armadillo Service Provision Contingency Plan
- 2/8 Climate and Planet Commitment
- 2/9 Graffiti and Litter
- 2/10 Outstanding Items

Item 3 Confidential Items

That in view of the confidential nature of the business about to be transacted, pursuant to the Public Bodies (Admission to Meetings) Act 1960, it is advisable in the public interest that any members of the press or public present be excluded and they be instructed to withdraw.

- 3/1 Confidentiality Confirmation
- 3/2 Funding Agreement

Item 4 Consideration of Impact of Decisions on Climate and Waste

Clerk's Report

Yate Town Council Meeting of the Environment and Community Committee 24th January 2023

Clerk's Report

Item 1 Items for Discussion / Requiring Resolution or Recommendation to Full Council

1.1 Consultations

a) Urgent consultations

To receive any urgent consultations.

1.2 Bristol Frome DNA Bid

To receive and consider request for funding to support DNA testing of River Frome.
(Appendix 1)

1.3 Spring Clean 2023

To consider location for Yate Town Council's 2023 Spring Clean; locations already suggested are Brimsham Shop area and adjacent streets verges or Abbotswood.

To agree location and dates.

1.4. Electric Vehicle Charging (EV) and EV Car Clubs

To **NOTE:**

- Officers have investigated opportunities for EV charging supply to the public, in collaboration with SGC schemes;
- Public EV charging at YTC sites: due to restrictions on profit through the sale of electricity to the public by Town and Parish Councils, (guidance issued by NALC), currently, is it not possible for YTC to supply their own public EV charger and directly sell electric to the public;
- EV Car clubs at YTC sites: YTC has requested that SGC consider Yate (particularly Abbotswood) as a trial area for the installation of EV car clubs; a

public car sharing facility. SGC officers advised they will consider Yate as a location in future plans. SGC currently does not have an established plan or funding route for EV car clubs. SGC is working towards a plan and will contact YTC when further information is available. Contact has been made with private providers of car sharing services, for further information on services available.

At present, YTC options for supplying public EV charging and EV car clubs are:

a) Public EV charging at YTC sites:

1. Wait for SGC to reach a point in their EV installation, where they can consider the inclusion of towns/parishes in their offer;
2. Contact private companies (3rd party) to explore opportunities to rent YTC land, to be used as an EV space. The 3rd party would manage all installation costs, maintenance and supply charges, so YTC make no "profit from the supply of electric" , but YTC can make profit, from income, for the lease of the land allocated to the EV facility.

b) EV Car clubs at YTC sites:

1. Wait for SGC (likely in collaboration with West England Combined Authority) to commence EV car club installation and aim to work in collaboration with them to install an EV car club location in Yate, with the hope of securing grant funding as part of a regional or local authority initiative;
2. Contact private companies (3rd party) to explore opportunities EV car club installation, on YTC land.

To agree a way forward for both projects, from the options presented above, or other options members recommend be pursued. To set priorities for actions following decisions taken on the options above (high, med, low).

1.5. Armadillo Out of Parish Funding for Youth Café

In December 2022 (via social media), the Armadillo received a request to offer a youth session to Horton Primary school. Historically, the Armadillo has not analysed postcode data, or restricted access to young people who live out of Yate parish. During the COVID19 pandemic, following best practice guidance and legal requirements for the limitation of social contacts, in order to give all Yate residents, the opportunity to attend the youth café, sessions were set in groups (bubbles), by primary school. Out-of-Yate primary schools were included in the groupings, as a percentage of young people living in Yate attended schools out-of-the parish.

The school groups worked well for staff and young people therefore, when COVID19 social restrictions were relaxed, the session grouping structure remained in place.

In December 2022, a data sample was conducted, to investigate the percentage of young people attending Armadillo Youth Café that were living outside Yate. The sample identified noteworthy percentages that out-of-Yate young people were attending Youth Café sessions.

Following communication between councillors across parishes, a grant application was submitted to Dodington Parish Council (DPC), for the proportionate costs of DPC resident attendance to Armadillo youth café (average approx. 14.21% Year 6, and 21.315% for year 7/8) for x1 term. The grant application to DPC was successful, to the value of £1,936.98.

To agree a way forward; options could include:

1. Using the same data sample, to contact other parishes where residents of those parishes have been identified as attendees of Armadillo Youth Café, and request those parishes consider financial contributions to Armadillo on behalf of their residents;
2. Commit to an annual data sample, to inform ongoing analysis of participant data, and future grant funding requests to parishes.

1.6 Yate Ageing Better Health & Wellbeing

- a) To receive a letter from Councillor Sandra Emms to the Bristol Post and Gazette. (Appendix 2).

To consider Yate Town Council sending a supporting letter to local publications, and to the Minister of State for Care and Mental Health, calling on UK Government to immediately action a 10-year plan (due but not delivered in 2022) aiming to increase dementia diagnosis and support to people with dementia, and their carers, with their health and care needs.

- b) To receive an update regarding the South Glos Council Ageing Partnership Board, and associated working group. To agree representative/s to join the Board and working group.

1.7 Public Space Protection Orders

The following item has been on the outstanding list;

Further to minute number 13 of the Environment and Planning Committee held on 11 November 2014, to **NOTE:**

- the Anti-Social Behaviour (ASB) Crime and Policing Bill received Royal Assent in March 2014 and is now a legal Act;
- Dog Control Orders are now part of Public Spaces Protection Orders (PSPO) under the ASB, Crime and Policing Act 2014;
- Public Spaces Protection Orders can only be made by a Local Authority and not by Town and Parish Councils;
- Correspondence has been sent to South Gloucestershire Council requesting they implement the required PSPO's in Yate.

Correspondence has regularly been sent to South Gloucestershire Council requesting a likely timeframe for progression of the PSPOs required in Yate.

A response has been received from South Gloucestershire Council

Service Director of Community Development (Appendix 3)

To consider response and agree way forward.

2. ITEMS FOR NOTING

2.1 Estates Manager's Report

To receive Estate Manager's Report with items for noting.

[Click here to read Estate Manager's report](#)

2.2 Status of all Groups that report to the Environment & Community Committee

To **NOTE** the following;

Sub-Committee/Group	Date of Meeting/Update	Appendix
Venues	Report for the period	Click here to read Venues Report
Events	Meeting to take place 20 th January 2023	
Joint Parishes Consultative Committee	No update	
Allotments	<p>A meeting to be held on 7.00pm Wednesday 1st February 2023 to discuss the allotments tenancy agreement and forming an association with local residents.</p> <p>At the Environment and Community Committee meeting on 8th November 2022, it was agreed that further to a previous resolution at the Environment and Community Committee, further formal contact by made with Barratt Homes regarding YTC's interest in the allotment site. To NOTE that Councillor Chris Willmore prepared a paper and sent it to Barratts in December 2022.</p> <p>Click here to read</p>	

	Thanks be extended to Councillor Willmore.	
Public Rights of Way, Commons and Greens Sub-Committee	No update. A meeting will be set when necessary.	
Reports from Representatives on Outside Bodies	Minutes received from outside bodies were previously circulated to Members with a request to advise if they wish to discuss matters contained therein.	Click here for Outside Bodies
Town Centre Strategy Group	A doodle will be circulated and date agreed for February 2023 meeting	

2.3 Yate Ageing Better Health and Wellbeing Sub-Committee

To **NOTE**:

- a. Yate Shopping Centre has confirmed the Yate Ageing Better Festival can be hosted at this location, on Wednesday 19th July 2023. Save the dates are in draft and will be sent to potential participants in January.
- b. Grace Church and Gateway Church have taken the decision not to continue to offer the Warm Welcome, due to low uptake of the services/facilities.
- c. Notes of the South Glos Community Hub meeting of 7 December 2022, to discuss the promotion and provision of Warm Spaces across South Glos, and other actions to promote key cost of living crisis information. [Click here to read notes](#)
- d. Dementia Café volunteer advert was published on 2nd December 2022. No volunteer applications have been received to date;
- e. YTC venues were uploaded to Bristol Open Space Directory “Well Aware”.

2.4 Leases for Ridgewood, The Common (including pitches) and Witches Hat

To **NOTE** that South Gloucestershire Council has been chased for movement on leases for Ridgewood, The Common (including pitches, the lease for which expires in September 2022) and Witches Hat (the lease for which expired in September 2015), as well as Eastfield Drive site.

2.5 Women’s Football

To **NOTE** an update was provided to Full Council on 6th September 2022 and a response is awaited. A reminder was sent on 28th November 2022 but to date no response has been received.

2.6 CONSULTATIONS

a) Consultations Received

To **NOTE** no new consultations for consideration have been received.

b) Consultation Responses

Consultation Name	Link/Appendix	Date Circulated	Closing Date	Notes
Covid Commemoration Consultation - Cabinet Office Closing Date; 5 December 2022	Click here for consultation	31.10.22	5.12.22	It was RESOLVED at the Environment and Community Committee meeting dated 8.11.22 that Councillors would submit comments individually, as requested by the consultation.

2.7 Armadillo; Service Provision Contingency Plan

To **NOTE**:

- The Senior Youth Coordinator and Youth Coordinator postholders started in post in November 2022;
- Following commencement in post of the above positions, the Community Projects staff withdrew session-cover support at the Armadillo at the end of December 2023, and the contingency plan was concluded.

2.8 Climate and Planet Commitment

To **NOTE** Climate and Planet Commitment update.

[Click here to read report.](#)

2.9 Graffiti and Litter

To **NOTE** graffiti (tagging) was reported on a seat at Halifax Road and was removed immediately. Some minor graffiti was identified during inspection rounds on seats at Kingsgate Park and a litter bin at Witches Hat and the graffiti was removed.

2.10 Outstanding Items

To **NOTE** status of pending log. [Click here to read](#)

Item 3. Confidential Items

3.1 Confidentiality Confirmation

To **RESOLVE** to enter confidential session if required: *That in view of the confidential nature of the business about to be transacted, pursuant to the Public Bodies (Admission to Meetings) Act 1960, it is advisable in the public interest that any members of the press or public present be excluded and they be instructed to withdraw.*

3.2 Funding Agreement

To receive and consider Confidential Appendix 4.

3.3 To **RESOLVE** to return to public session.

Item 4. Consideration of Impact of Decision on Climate and Waste

To consider if there are any impacts on climate and waste following decisions taken during this meeting.

Bristol Frome eDNA survey bid

Fish populations are important elements of the ecology of the Bristol Frome.

The Bristol Avon Rivers Trust (BART) will be publishing the Bristol Avon Fish Recovery Strategy in early 2023 which highlights the need for quality data and a strategic action plan for each sub-catchment of the Bristol Avon. Upto date fisheries data will be important in the creation of a sub-catchment action plan for the Bristol Frome.

BART have put together a quote of £15,000 to undertake 8 eDNA samples at locations to be determined around the Frome and its tributaries. South Gloucestershire Council is able to contribute £6,000 from Climate Emergency funds and the Bristol Avon Catchment Partnership is able to contribute £5,000 from their partnership fund. ***We are now looking for contributions to fund the remaining £4,000.***

The main river Frome runs through the following parishes and we hope that as a parish you may be willing to help support nature restoration in your parish.

- Sodbury Town council
- Yate
- Iron Acton
- Westerleigh
- Winterbourne

Why the need for eDNA analysis of the Bristol Frome?

Much of the Bristol Frome and its tributaries have not been surveyed for some time, the town of Yate has no fish data within the last 10years. eDNA provides a cost effective and reliable technique to determine the fish species present in the river system and their spatial and temporal distribution.

Project Aims and objectives

The main aims and objectives for this project are to:

- Deliver eDNA analysis for 8 sites within the Bristol Frome (locations to be determined based on outputs of Bristol Avon Fisheries Strategy).
- Provide mapped outputs of fish distributions through the survey area.
- Use data provided to support strategic assessment of fish barriers to help understand which barriers have most significant impacts and where future investment can have greatest gains.
- Provide recommendations for ways to improve habitat within Bristol Frome sample reaches to support fish.

What is eDNA?

The eDNA survey tool would provide a valuable fish species distribution dataset.

Some of the reaches within the Frome have not had any fisheries surveys completed in the last 10 years so the abundance and diversity of fish populations within these reaches are somewhat unknown.

The sampling methodology utilised during this project provides a novel and useful tool for future monitoring and for aiding prioritisation of future river improvements.

The eDNA dataset would help improve our understanding of which fish species are frequenting the Bristol Frome and in doing so can provide a snapshot of species presence throughout the main river Frome and tributaries. This data will help inform decision making that impacts on the water environment, including development in and around urban areas such as Yate and it can be used to help prioritise future habitat improvement and fish passage works as part of the Bristol Avon Fish Recovery Strategy.

eDNA analysis is a service which uses metabarcoding of the 12Sgene to characterise fish species diversity from eDNA samples. Sources of eDNA include secreted faeces, mucous, gametes, shed skin, scales, hair and carcasses. Metabarcoding is a highly validated and widely used analysis that has been shown to outperform electrofishing for fish community assessment. Semi-quantitative data is obtained from this analysis and fish can be surveyed year-round.

eDNA offers a cost-effective and supplementary monitoring technique that will improve our understanding of the distribution of fish throughout the Frome sub-catchment, particularly important are those areas where we have little or no data. The technology also provides an indication of relative abundance, which can be useful for suggesting relative differences in abundance of a particular genus between two points in a river network. This is particularly useful for comparing relative abundance up and downstream of a barrier, where results can strongly indicate where genus are prevented passage due to the presence of a river obstruction or impact to habitat.

As part of Bristol Avon Catchment Partnership Fisheries strategy BART have put together the [Bristol Avon fisheries Dashboard](#) summarising fisheries survey and barrier information. Using this dashboard, it is possible to identify when samples were last taken in your area. In some cases this is never or approaching 10years ago (Appendix 2 shows results year by year for last 10 years).

Recommendations:

SGC need to fill the £4k shortfall to undertake the eDNA survey and are hoping that Town or Parish Councils might be able to help with any amount. We are sending out this brief to multiple Town and Parish Councils that have the Frome running through their district.

Appendix 1 Quote from Bristol Avon Rivers Trust.



Quotation – RFR B.Frome eDNA fish survey V1

Bristol Avon Rivers Trust
 Unit 4 Corum Two
 Corum Office Park
 Crown Way
 Warmley
 Bristol
 BS30 8FJ

02/11/2022

REF: RFREDNAV1

Description of works	Quantity	Unit Price	Amount (GBP)
A strategy of 8 sampling locations, with 2 replicates at each location, over 2 seasons. 32 samples total.			
Management & Coordination	1	£1,908	
Sampling (2 replicates, 2 seasons) 32 samples in total	1	£1,500	
Lab analysis, results & interpretation report	1	£11,560	
Subtotal			£14,968
VAT			N/A
Total GBP			£14,968

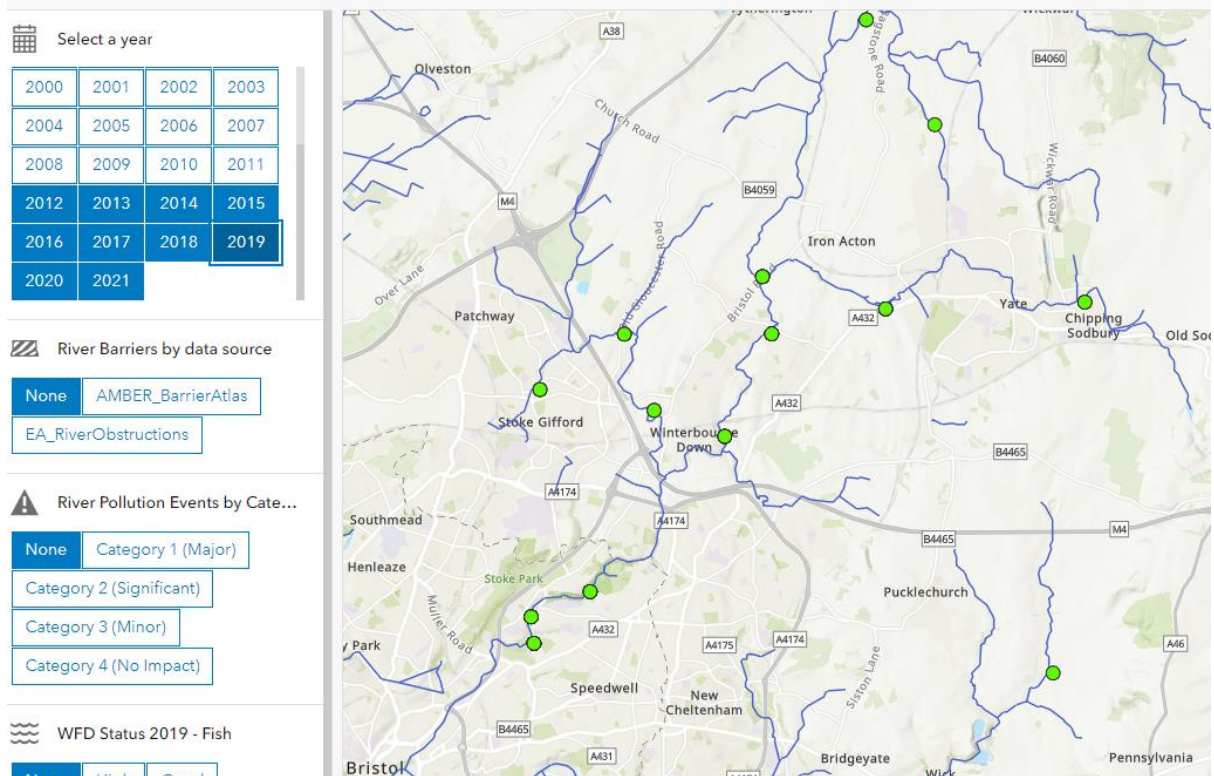
Appendix 2

Bristol Avon Fish Explorer results Bristol Frome 2012-2022. [BART Fisheries Mapping- Dec 21 \(arcgis.com\)](https://arcgis.com)

No surveys were undertaken on the Bristol Frome 2018 and 2020.

Bristol Avon Fish Explorer

1978-2021



Bristol Avon Fish Explorer

1978-2021

Select a year

2000	2001	2002	2003
2004	2005	2006	2007
2008	2009	2010	2011
2012	2013	2014	2015
2016	2017	2018	2019
2020	2021		

River Barriers by data source

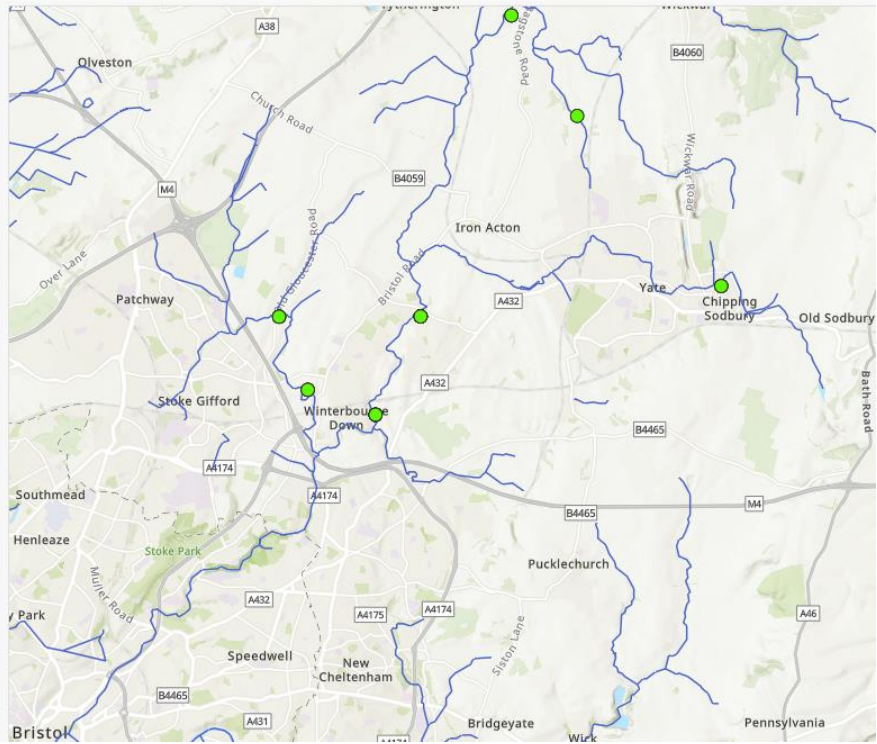
- None
- AMBER_BarrierAtlas
- EA_RiverObstructions

River Pollution Events by Cate...

- None
- Category 1 (Major)
- Category 2 (Significant)
- Category 3 (Minor)
- Category 4 (No Impact)

WFD Status 2019 - Fish

- None
- High
- Good



Bristol Avon Fish Explorer

1978-2021

Select a year

2000	2001	2002	2003
2004	2005	2006	2007
2008	2009	2010	2011
2012	2013	2014	2015
2016	2017	2018	2019
2020	2021		

River Barriers by data source

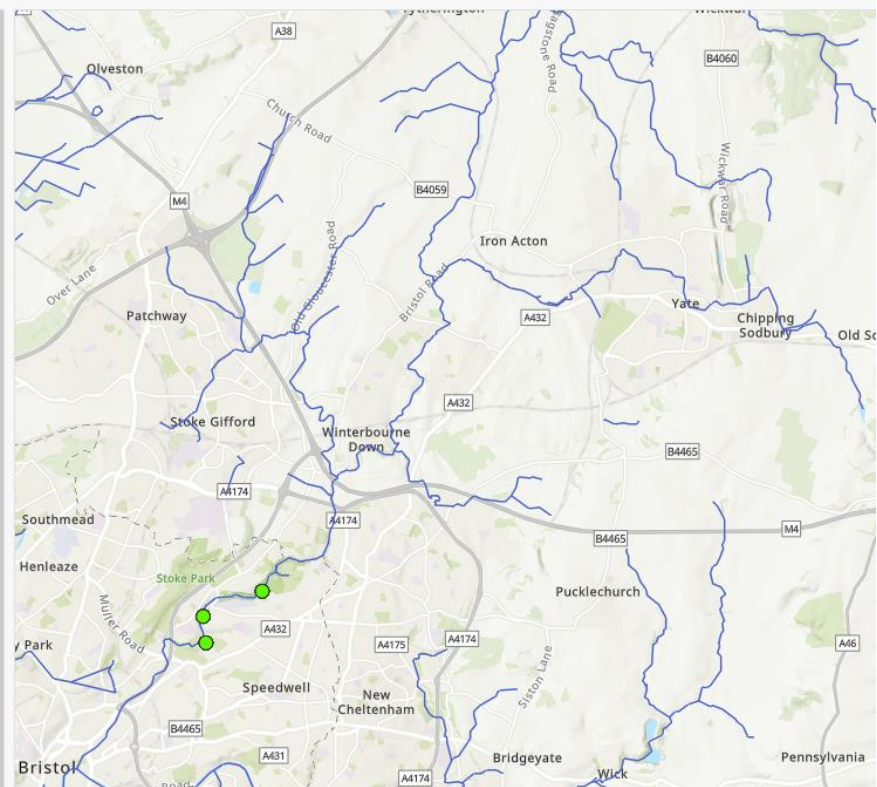
- None
- AMBER_BarrierAtlas
- EA_RiverObstructions

River Pollution Events by Cate...

- None
- Category 1 (Major)
- Category 2 (Significant)
- Category 3 (Minor)
- Category 4 (No Impact)

WFD Status 2019 - Fish

- None
- High
- Good



Bristol Avon Fish Explorer

1978-2021

Select a year

2000	2001	2002	2003
2004	2005	2006	2007
2008	2009	2010	2011
2012	2013	2014	2015
2016	2017	2018	2019
2020	2021		

River Barriers by data source

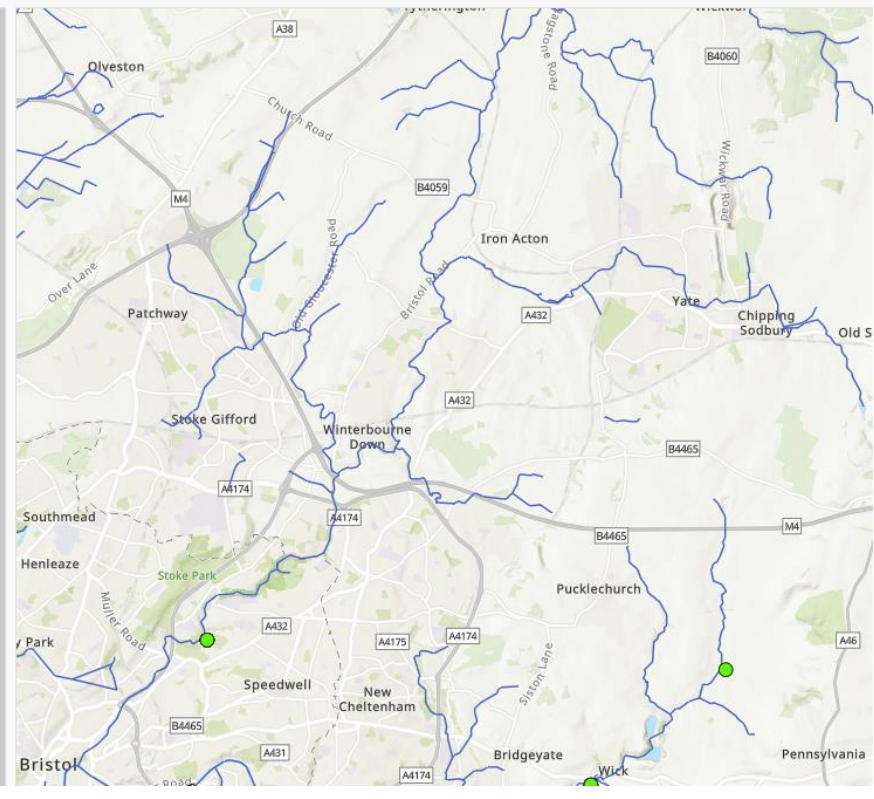
None AMBER_BarrierAtlas EA_RiverObstructions

River Pollution Events by Cate...

None Category 1 (Major) Category 2 (Significant) Category 3 (Minor) Category 4 (No Impact)

WFD Status 2019 - Fish

None High Good



Bristol Avon Fish Explorer

1978-2021

Select a year

2000	2001	2002	2003
2004	2005	2006	2007
2008	2009	2010	2011
2012	2013	2014	2015
2016	2017	2018	2019
2020	2021		

River Barriers by data source

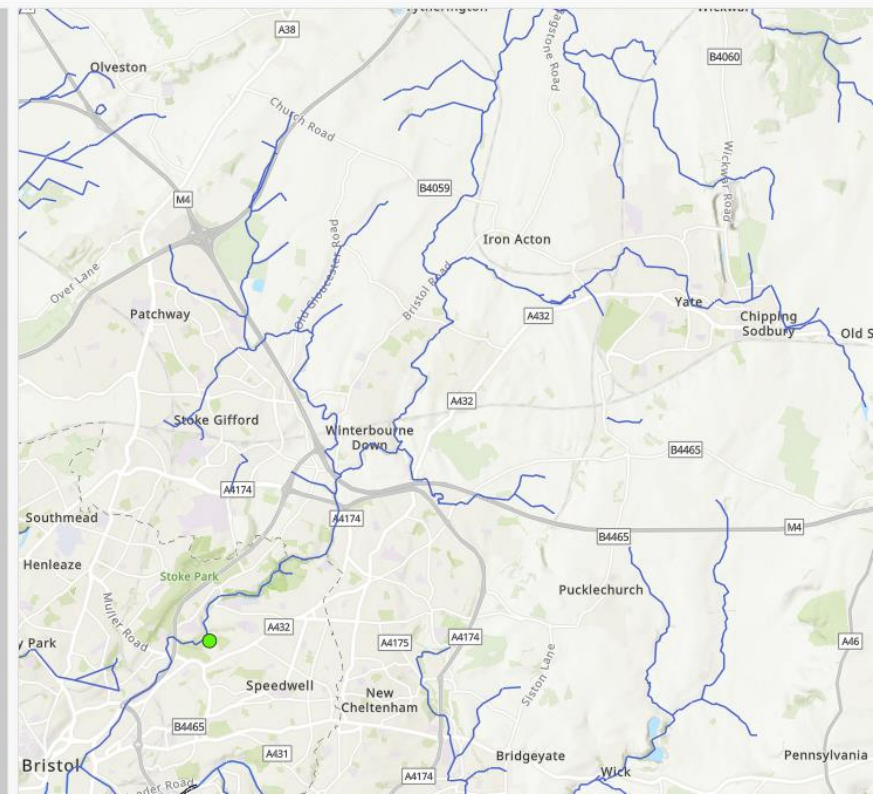
None AMBER_BarrierAtlas EA_RiverObstructions

River Pollution Events by Cate...

None Category 1 (Major) Category 2 (Significant) Category 3 (Minor) Category 4 (No Impact)

WFD Status 2019 - Fish

None High Good



Bristol Avon Fish Explorer

1978-2021

Select a year

2000	2001	2002	2003
2004	2005	2006	2007
2008	2009	2010	2011
2012	2013	2014	2015
2016	2017	2018	2019
2020	2021		

River Barriers by data source

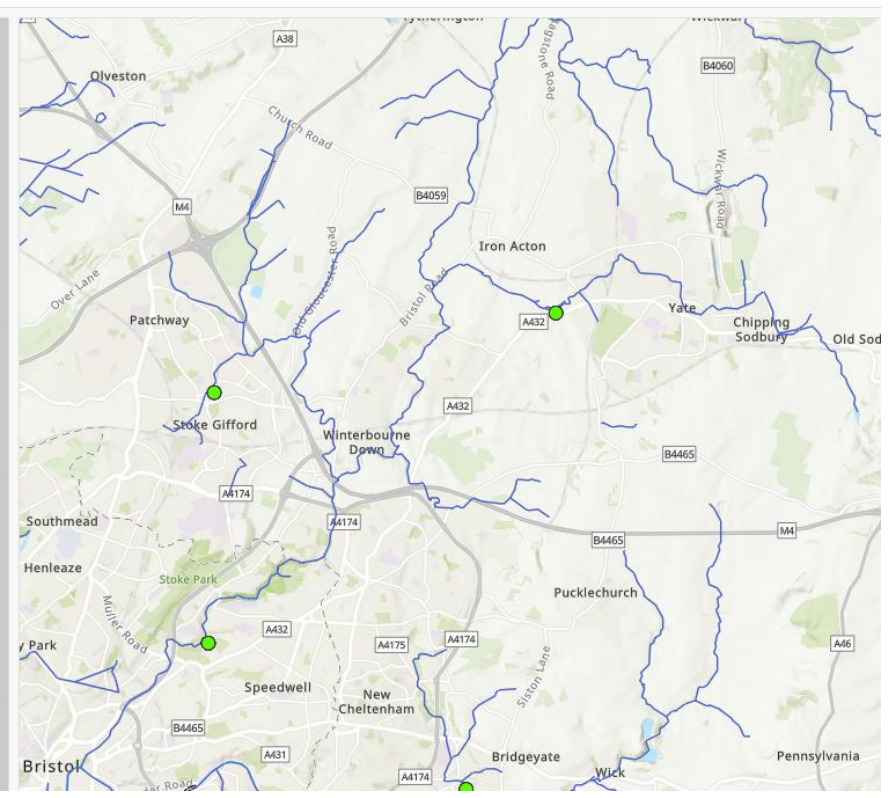
None AMBER_BarrierAtlas EA_RiverObstructions

River Pollution Events by Cate...

None Category 1 (Major) Category 2 (Significant) Category 3 (Minor) Category 4 (No Impact)

WFD Status 2019 - Fish

None High Good



Bristol Avon Fish Explorer

1978-2021

Select a year

2000	2001	2002	2003
2004	2005	2006	2007
2008	2009	2010	2011
2012	2013	2014	2015
2016	2017	2018	2019
2020	2021		

River Barriers by data source

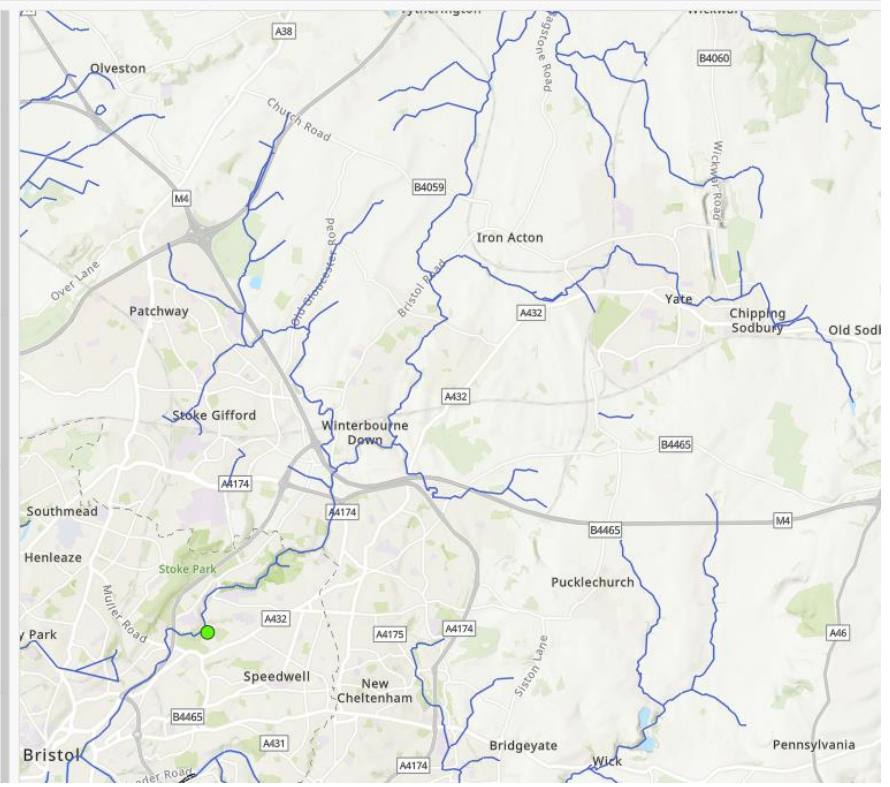
None AMBER_BarrierAtlas EA_RiverObstructions

River Pollution Events by Cate...

None Category 1 (Major) Category 2 (Significant) Category 3 (Minor) Category 4 (No Impact)

WFD Status 2019 - Fish

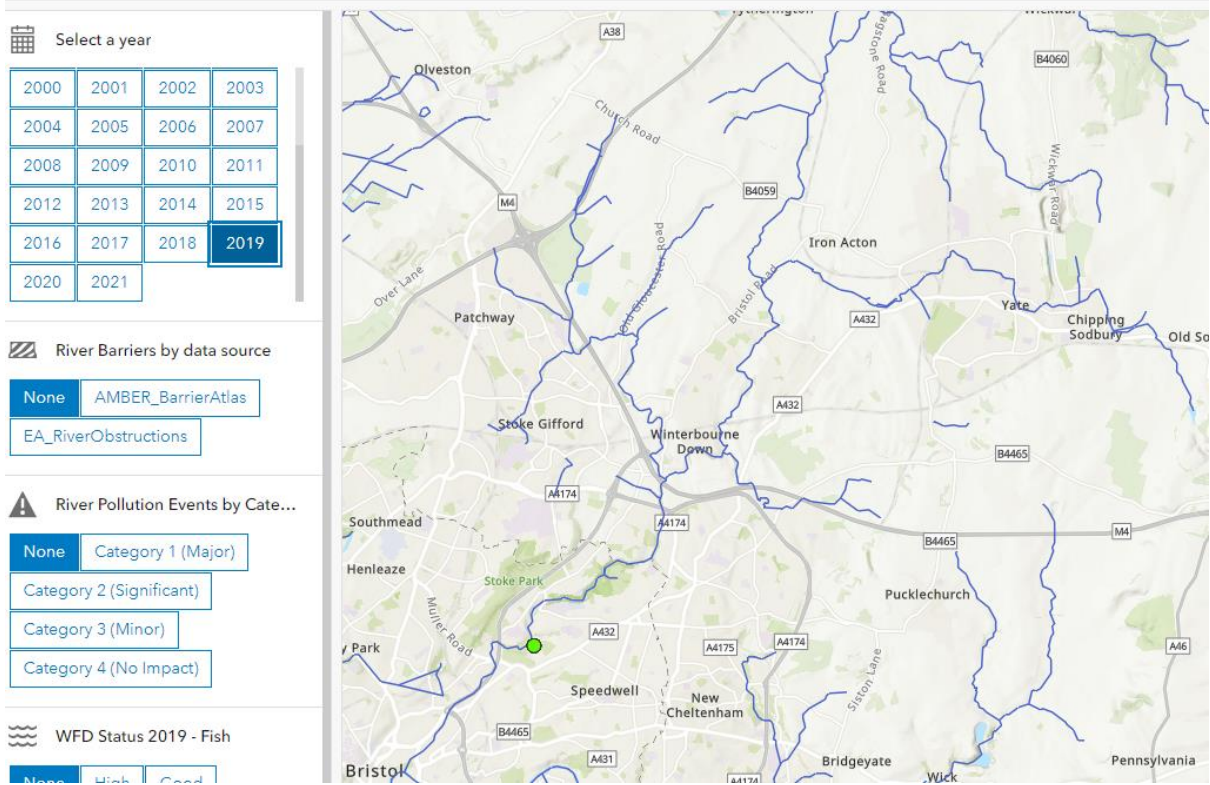
None High Good



No sites monitored 2018.

Bristol Avon Fish Explorer

1978-2021



No sites monitored 2020.

Bristol Avon Fish Explorer

1978-2021

Select a year

2000	2001	2002	2003
2004	2005	2006	2007
2008	2009	2010	2011
2012	2013	2014	2015
2016	2017	2018	2019
2020	2021		

River Barriers by data source

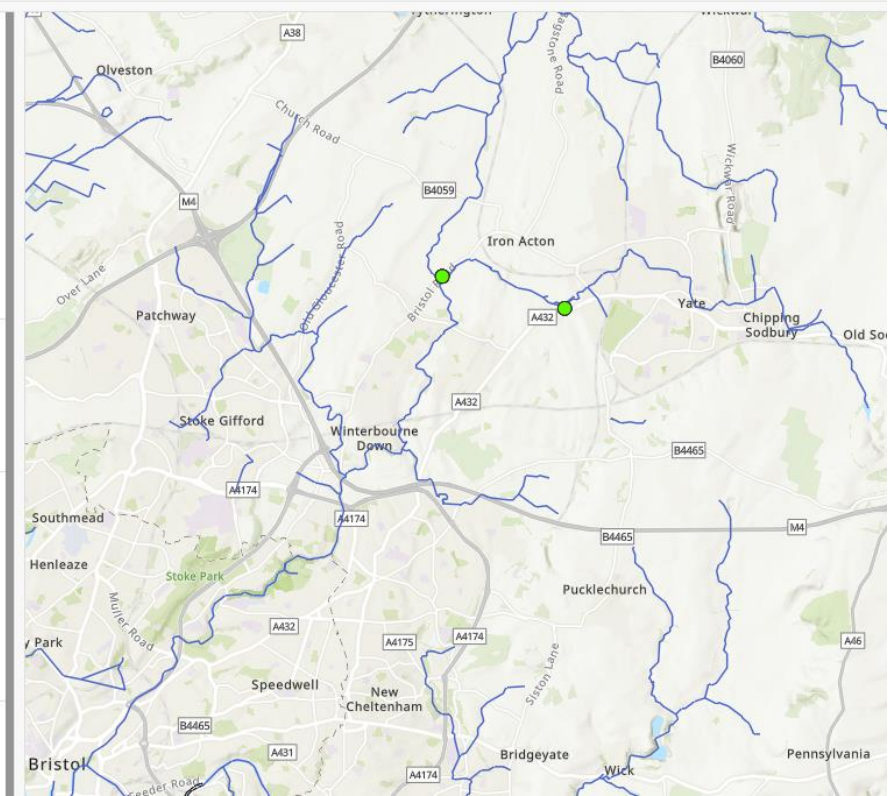
- None
- AMBER_BarrierAtlas
- EA_RiverObstructions

River Pollution Events by Cate...

- None
- Category 1 (Major)
- Category 2 (Significant)
- Category 3 (Minor)
- Category 4 (No Impact)

WFD Status 2019 - Fish

- None
- High
- Good



Letter to the Editor: Time for #PlanD - the Government must act now on dementia

To the Editor,

Dementia is the UK's biggest killer, and one of the greatest health challenges facing society. Earlier this year the UK Government announced a 'visionary' 10-year Plan for Dementia, aiming to increase diagnosis and support people with their health and care needs. This announcement provided hope for the 900,000 living with dementia in the UK. The Government promised to publish the plan by the end of 2022 – but we are still waiting, and my patience is wearing thin.

With a change in Secretary of State for Health and Social Care, not once, not twice, but three times since July, progress on the 10-Year Plan for Dementia has stalled. And now, 19 times over, the Government have responded to questioning, stating “further information will be available in due course”.

While I am thrilled by the recent positive drug trial results, they give hope for the future, but for those living in the now, this lack of clear direction from the Government is costing them time and hope.

Dementia is long overdue a plan, and people affected by dementia are long overdue the respect and consideration they deserve. But without delivering on their commitments, the Government are making a clear statement; dementia is not their priority.

Publishing a plan to improve the lives of people affected by dementia is so important to me because I work with people who are living with dementia and I understand the impact that underfunding has on people who are living with dementia and their carers. I am the dementia lead on Yate Town Council and I am working with the council to make Yate a Dementia Friendly Community. We have achieved 'Working to Become Dementia Friendly ' status from the Alzheimer's Society.

The Government must publish the 10-year Plan for Dementia now and help people in this area affected by dementia live more fulfilled and less fearful lives.

Dementia doesn't wait for due course – we need a #PlanD now.

Sandra Emms
Thornbury and Yate

Public Space Protection Orders

Response from Service Director of Community Development (SGC);

We have discussed Yate Town Council's proposal, and while we recognise the reasoning behind it, we do not consider it is appropriate to proceed with a stand-alone Public Spaces Protection Order (PSPO) for dog control in Yate at the current time. This is for the following reasons:

1. We would be looking for any PSPOs introduced to be as consistent as possible throughout South Gloucestershire, as opposed to having separate PSPOs relating to different areas. This is so dog walkers understand what is expected of them when using public spaces in South Gloucestershire.

The Council's Green Infrastructure strategy contains two actions specific to dogs and dog control which may influence the content of any future PSPOs:

- Prepare and implement a plan to encourage responsible dog ownership when using our green spaces. The plan is due to be drafted during 2023.
- Investigate options for dog free and dog exercise areas in our busiest parks by 2024.

2. To introduce a PSPO we need to demonstrate that the activities carried out have a detrimental effect on the quality of life of those living in the locality or is likely that they will have such an effect. The dog warden's records do not indicate there is justification for introducing controls in Yate which do not apply elsewhere in South Gloucestershire.

3. The Council needs to have the resources to enforce any PSPOs introduced, through both patrolling and issuing Fixed Penalty Notices (FPNs) and preparing prosecution files in the case of non-payment of the FPN. Enforcing PSPOs would fall within the remit of the Dog Wardens and Street Enforcement Officer, and prosecution files prepared by the Environmental Enforcement team. We have two dog wardens who cover the whole of South Gloucestershire, and their primary responsibilities relate to stray dogs and statutory nuisance. The dog wardens do have some capacity to carry out patrols as part of their educational work, but due to the responsive nature of their role, are often called away from routine patrols at short notice. The future of the Street Enforcement service is uncertain with funding for the existing officer due to end in March 2023.

4. We need to recognise there are significant evidential challenges that would exist with a PSPO of this kind. Whilst a large proportion of the public would

most likely adhere to the PSPO, as they do with other pieces of legislation, owners of errant dogs are unlikely to engage with either the PSPO itself or any officer trying to enforce it. As such the identification of an individual who may have committed an offence will prove challenging, even if an Officer happens to be in situ at the time it occurs. This becomes even more of an issue when/if we receive a report from a member of the public and there is either no or little supporting information. In such circumstances, the inability to enforce against or even identify a perpetrator, would undermine the PSPO and adversely affect the reputation of the Council. Where issues are being caused by an individual, who we can identify, we can address this behaviour using existing Community Protection Notices powers.